

NATURE SCIENCE INTERNSHIP PROGRAMME

K.K ENGLISH HIGH SCHOOL

TEAM MEMBERS

TEAM "A"(PURPLE HAIRSTREAK)

- GABRIELLA BENEDICTA.A
- BHAVANI PRIYA.V
- MOHAMMED MAAZ
- BHARATH
- SHRAVANI.K

TEAM "B" (ADONIS BLUE)

- MISBA MEHREEN S.K
- RANJITHA .C
- DEEPIKA
- SANJANA SHREE
- SHAREEN TAJ

NATURE HAS EVERYTHING TO

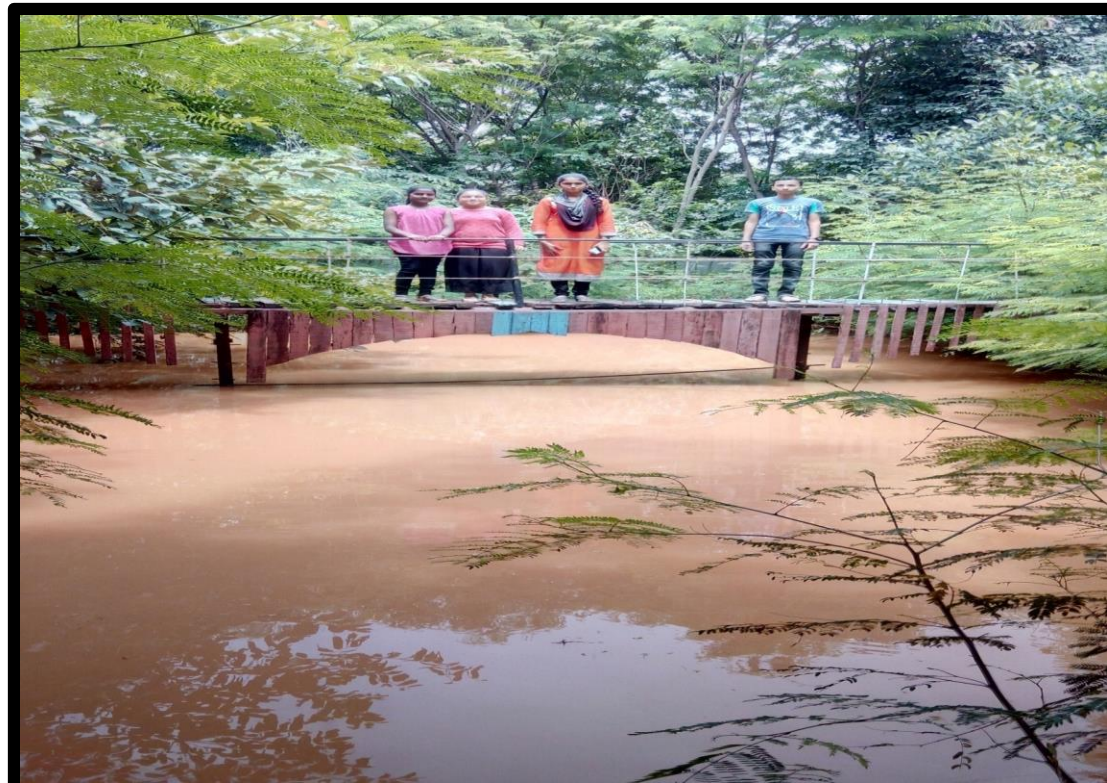
FULLFILL OUR NEEDS

NOT OUR GREED

MAHATHMA GANDHI

STUDY AREA

School premises and the recharge pond



TREES

Cinnamon

Egg fruit plant

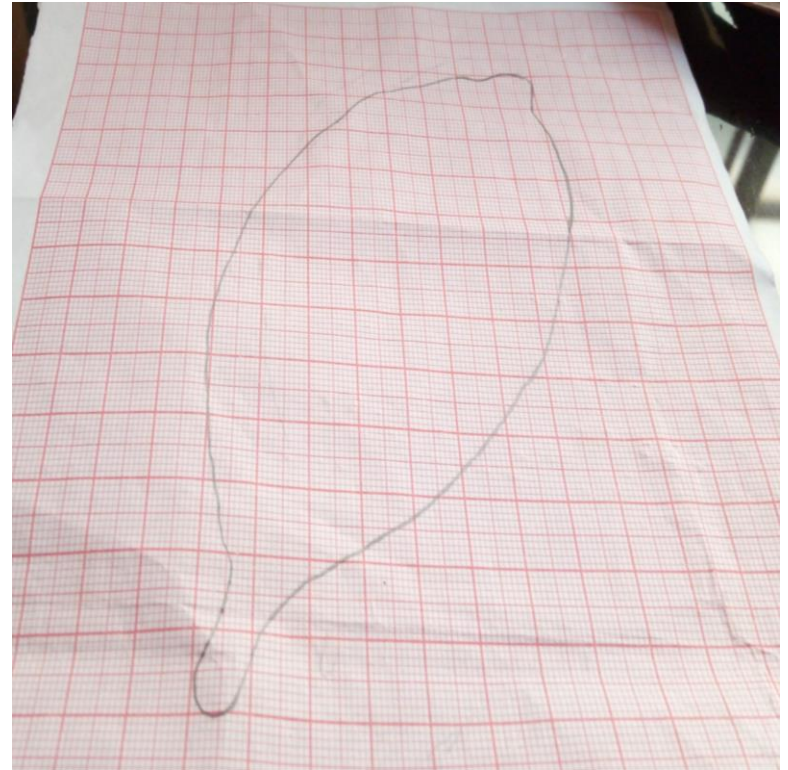
Butter fruit plant

Silk cotton plant

Soap nut plant

Cashew nut plant

“KNOW A PLANT”



BIRDS

- COUCAL.
- MYNAH.
- BLACK KITE.
- GREEN BARBET.
- RED- WHISKERED BULBUL.
- KOEL(MALE AND FEMALE)
- KINGFISHER.

4 Sundays at 6 in the morning.





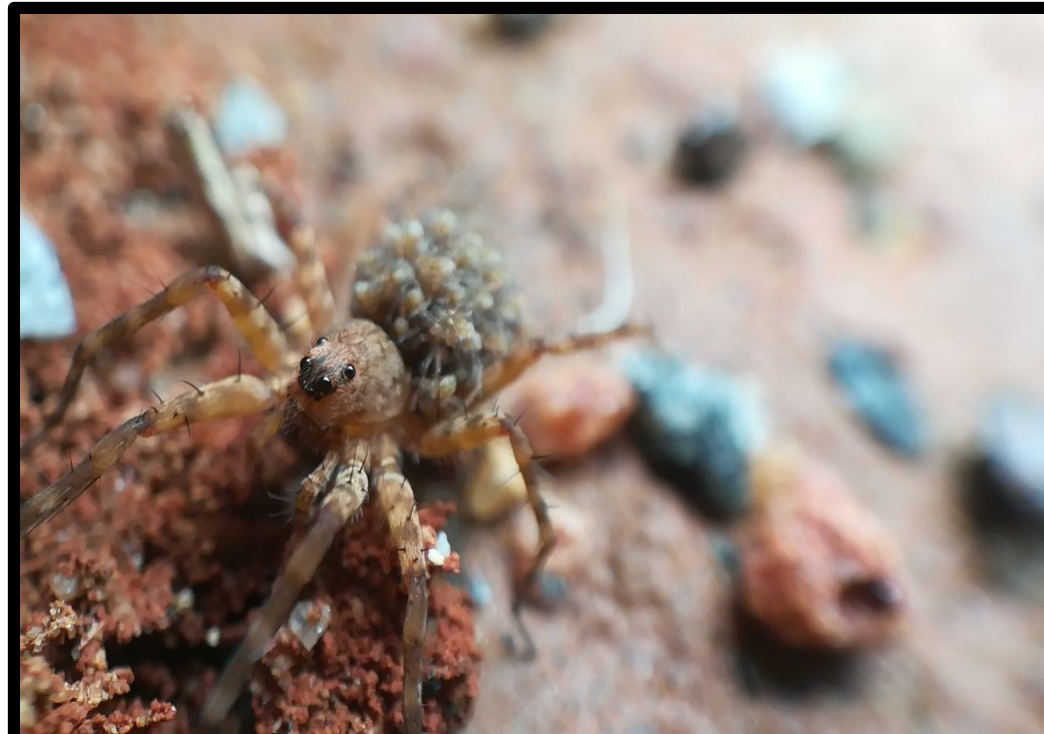
BUTTERFLIES.

- PLAIN TIGER.
- LEMON PANSY.
- CRIMSON ROSE.
- COMMON JAY.



SPIDERS.

- FEMALE WOLF SPIDER.
- TARANTULA.
- SIGNATURE SPIDER.



ANT MIMICKING SPIDER.



WATER QUALITY ANALYSIS

- 1) TDS of 5 borewell water , rain water and RO unit water was tested.



FOOD MILE.

- Sunday market at Varthur.
- Locally grown vegetables are sold expect onion.

PENDING WORK

- Soil analysis.

THANK YOU